

RESEARCH

Open Access



# Household CO<sub>2</sub>-efficient energy management

Laura Fiorini<sup>1\*</sup> and Marco Aiello<sup>1,2</sup>

From The 7th DACH+ Conference on Energy Informatics  
Oldenburg, Germany. 11-12 October 2018

\*Correspondence: [lfiorini@rug.nl](mailto:lfiorini@rug.nl)

<sup>1</sup>Department of Distributed Systems, University of Groningen, Nijenborgh 9, 9747 AG Groningen, The Netherlands  
Full list of author information is available at the end of the article

## Abstract

Residential and commercial buildings are responsible for one third of the total (CO<sub>2</sub>) emissions in the European Union, which are the main cause of global warming. Although the thermal load has long been considered the primary reason of domestic energy consumptions, the increasing demand for electricity has a non-negligible environmental impact, given that about 40% of electricity is generated by burning fossil fuels. Moreover, the amount of CO<sub>2</sub> emitted to produce one kWh can greatly vary in time, depending on the sources used to generate it. For instance, the German electricity emissions intensity factor varied in 2017 between 113 and 533 gCO<sub>2</sub>eq/kWh. This paper proposes a novel CO<sub>2</sub>-efficient energy management approach to schedule household appliances while minimizing carbon dioxide emissions, given the possibility to change energy carriers (i.e., natural gas and electricity) and to shift loads in time. Several common loads are considered, and their operation is scheduled according to the emission factor of the German power grid. The results show that switching energy carriers can successfully enable up to 40% emissions reductions while indicating that shifting loads in time has little impact.

**Keywords:** Carbon emissions, Optimal scheduling, Hybrid appliances

## Introduction

Climate change is one of the major challenges that the planet is facing, due to the increasing emission of (GHG), main responsible for the greenhouse effect. Among these gases, CO<sub>2</sub> contributes for the largest share, and it is mainly caused by human activities (Stocker et al. 2014). The energy sector is responsible of roughly two-thirds of all GHG emissions (OECD 2015); in Europe, residential and commercial buildings cause 36% of CO<sub>2</sub> emissions (European Commission). Traditionally, Heating Ventilation and Air Conditioning (HVAC) demand have been considered the main reasons for domestic energy consumption, and, hence, for CO<sub>2</sub> emissions (Haines et al. 2010). However, the increasing ownership of appliances and their use have caused a significant rise in households' need for electricity (Haines et al. 2010), whose environmental impact varies according to the production sources. When using electricity bought from the grid, the amount of CO<sub>2</sub> emitted to generate a kWh is determined by the current generation mix. For instance, given a certain amount of power to be produced, the emission intensity factor associated

with a kWh at windy or sunny day is likely to be significantly lower than in a windless and cloudy one, when almost all the power is generated by plants burning fossil fuels.

Demand-side management (DSM) programs aim to control the residential electric use in response to price signals or incentive payments. In a price-based scheme, the consumers are offered time-varying rates to modify their demand over time, e.g., to shift the consumptions towards off-peak times; in an incentive-based one, rewards are given to those users who accept to reduce their consumptions when requested by the utility (Siano 2014). The main drivers for DSM programs are the risk of congestions along lines and the possibility to postpone expensive investments costs for the expansion of the infrastructure capacity, while giving the consumers the chance to reduce their energy bills. By an environmental point of view, while reducing the consumptions has certainly a positive effect, a price-based shifting of the demand over time might not always lead to the solution with lowest environmental impact (Stoll et al. 2014). Several works propose electric load management strategies accounting for both price and CO<sub>2</sub> signals. For instance, Sou et al. (Sou et al. 2013) propose a decision aiding framework for smart household appliances scheduling with the aim of finding a trade-off between minimization of electricity bill and CO<sub>2</sub> emissions. The start time of a dishwasher, a dryer, and a washing machine has to be assigned, while observing some constraints, such as user's preferred running interval. Similarly, Paridari et al. (Paridari et al. 2015) apply mixed-integer linear programming techniques to solve a multi-objective optimization scheduling problem, which includes smart appliances, electrical storages, and use behavior uncertainties. Both studies use Swedish data for prices and CO<sub>2</sub> intensity, which appear to have a negative relation; as a consequence, a decrease in electricity bills corresponds to an increase in emissions and vice versa. Nilsson et al. (Nilsson et al. 2017) draw analogous conclusions after investigating to what extent the visualization of spot prices, by means of a display installed in the stairwell of Swedish households, can affect residential electricity consumptions and can stimulate changes in consumption behavior. Braun et al. (Braun et al. 2016) propose the optimization of appliances in a residential and a commercial building, by solving a multi-objective problem that includes conflicting objectives, i.e., the minimization of costs, emissions, user discomfort, and technical wearout. Space conditioning control is the main objective of Dahl Knudsen et al. (Dahl Knudsen and Petersen 2016), which investigate the potential economic and environmental benefits of implementing a model predictive controller for Danish space heating system. Defined as a weighted sum of electricity costs and emissions, a purely economical oriented controller would reduce the consumptions in peak periods, but it would also cause an increase in CO<sub>2</sub> emissions. Recent studies (Mauser et al. 2015; Mauser et al. 2016; Braun et al. 2016) focus on the energetic and economic benefits of using hybrid appliances which integrates different energy carriers, such as electricity, natural gas, and hot water. The results show potential significant potential cost reductions, an increase in the efficiency and flexibility of the system. To the best of our knowledge, there are no reported studies that consider the use of CO<sub>2</sub> signals to schedule household appliances with respect to different energy carriers. Hybrid appliances are, indeed, still not extensively investigated, as their availability is limited (Mauser et al. 2017).

The aim of this work is to investigate the potential savings in terms of carbon emissions by developing a CO<sub>2</sub>-efficient energy management for the operation scheduling of household appliances, given the possibility to change energy carriers and to shift their operation

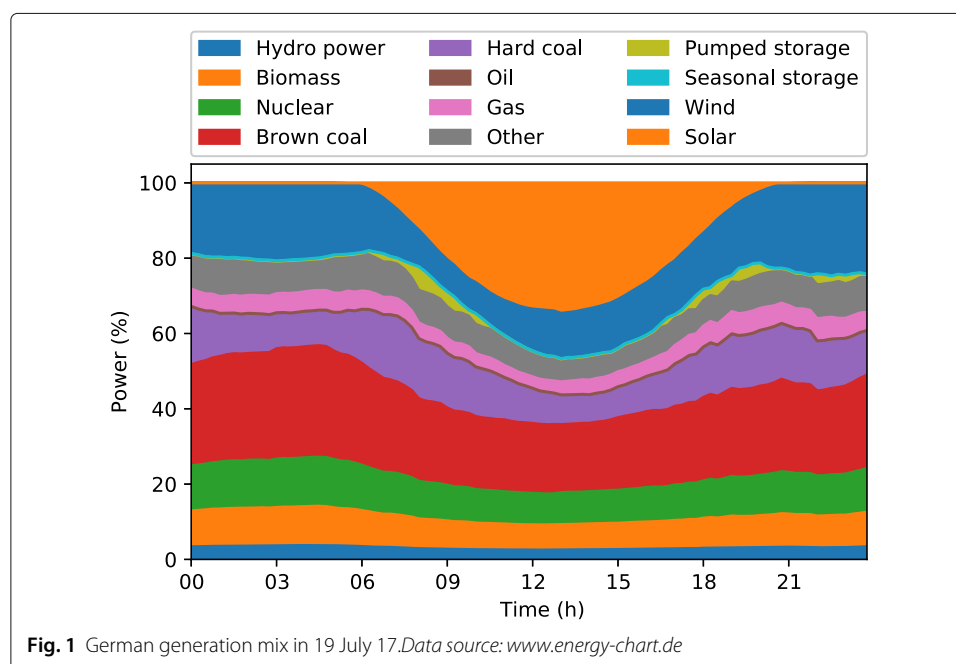
in time. We consider six common appliances and seasonal thermal loads, which include the hot water and space heating demands.

The remainder of the paper is organized as follows: the second section introduces the concept of dynamic CO<sub>2</sub>-equivalent intensity factor and how it can be calculated. The third section provides a classification of household appliances, while the optimization problem is formulated in the fourth one. The simulations and the evaluations are described in the fifth section. The conclusive section summarizes the main findings and discusses future work.

### Dynamic CO<sub>2</sub>-equivalent intensity factor

Given the generation mix of a power system and the hourly amount of energy generated per type of unit, it is possible to calculate the dynamic CO<sub>2</sub>-equivalent intensity factor associated to one kWh of energy that an end-user buys from the grid. Stoll et al. present a method to calculate the hourly values based upon the amount of hourly electricity generated and traded, and the emission factors of the sources (Stoll et al. 2014; Nilsson et al. 2017). In this study, we use the data available for the German electricity grid on the European Network of Transmission System Operators for Electricity (ENTSO-E) Transparency Platform (Entsoe Transparency Platform). In Fig. 1, one can see an example of hourly generation mix for one day in July 2017, when one kWh produced in a very windy and sunny hour (e.g., at 12.00 pm) was “cleaner” than a unit of energy produced during night hours (e.g., 01.00 am), when there was no solar production. Considering the emission factors in Table 1, the dynamic CO<sub>2</sub>-equivalent intensity factor of the German grid varied in 2017 between 113 gCO<sub>2</sub>eq/kWh and 533 gCO<sub>2</sub>eq/kWh.

Emission factors for several kinds of sources are given in (Weisser 2007; Kono et al. 2017; Edenhofer et al. 2011); it is possible to quantify the emissions over all stages of electricity production, from production of infrastructure, technologies, and fuel, to conversion to electricity, to waste management. For the sake of completeness, we consider the



**Table 1** Life-cycle GHG emission for power plants, expressed in gCO<sub>2</sub>eq/kWh

Biomass	Solar PV	Wind onshore	Wind offshore	Geothermal	Pumped-Storage
71	43	8	9	45 *	34
Run-of-the-river	Reservoir	Nuclear	Lignite	Coal	Coal-derived gas
4	9	11	820	800	800
Gas	Oil	Waste	Other		
400	520	690 **	247		

The main source for these values is (Weisser 2007). Values marked with \* are taken from (Edenhofer et al. 2011), and those marked with \*\* are from (Johnke 2009). Since it is not specified which sources are included in "Other", the life-cycle GHG emission factor for this category is calculated as the mean value of all other known factors

emission values related to a life-cycle assessment. In particular, Weisser (Weisser 2007) reviews and compares the life-cycle GHG emissions for *present* and *future/advanced* technologies, the latter referring to best performance power plants with increased efficiency in a realistic 2010-2020 scenario. In Table 1, we report the emission factors used in this study. When available, we use the data for future/advanced technologies (i.e., for lignite, hard coal, gas, solar, and wind), otherwise mean values are considered. The areas in which improvements in GHG emissions may occur in future depend on the type of power plants. For instance, power plants burning fossil fuels are likely to be equipped with improved abatement technologies and burners; on the other hand, the development of new materials will reduce the emissions in the construction phase of wind turbines and solar panels (Weisser 2007).

According to the criteria used by ENTSO-E in drawing its *Monthly Statistics Reports* (Statistics and Data), we use the generation data available for the third Wednesday of four months of 2017, namely January, April, July, and October. Moreover, we include the data for May, 8th 2016, a sunny and windy Sunday when more than 50% of energy was produced by renewable plants, covering more than 90% of power demand in a couple of hours (Craig Morris). For each day, we calculate the dynamic CO<sub>2</sub>-equivalent intensity factor for the German grid  $EF_{e,t}$  as follows:

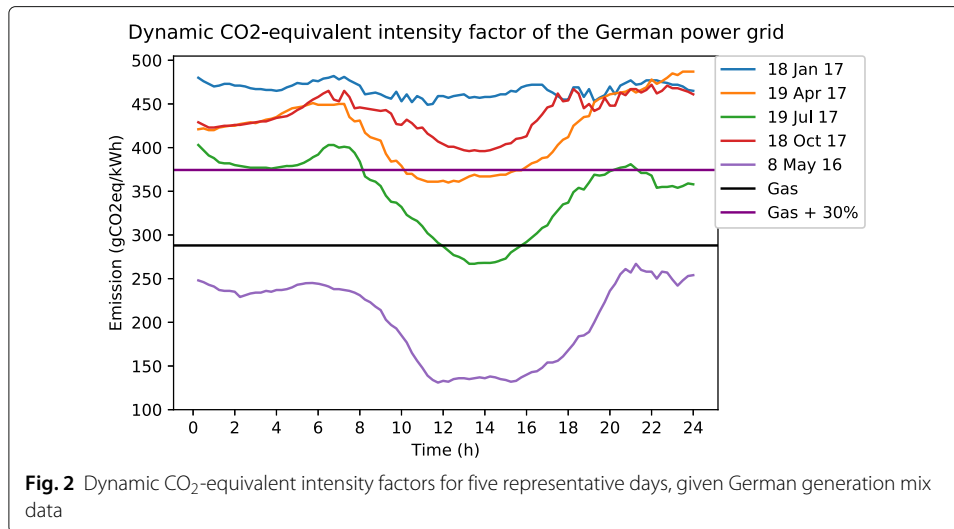
$$EF_{e,t} = \frac{\sum_{pp} E_{t,pp} \cdot EF_{pp}}{\sum_{pp} E_{t,pp}} \quad (1)$$

where  $E_{t,pp}$  is the energy produced by power plant  $pp$  in time step  $t$ , and  $EF_{pp}$  is the life-cycle GHG emission factor of power plant  $pp$ . The resulting dynamic CO<sub>2</sub>-equivalent intensity factors are displayed in Fig. 2. These values are compared to the emission factor of burning gas for heating purposes, i.e., 288 gCO<sub>2</sub>eq/kWh (Edenhofer et al. 2011), and to the equivalent value increased by +30%, corresponding to the increasing in appliances' consumptions when using gas instead of electricity as main source (Mauser et al. 2016; Mauser et al. 2017). When appliances are using gas or hot water, in fact, additional losses have to be taken into account, such as heat dissipation. This study does not consider the German import of the electricity from the neighboring countries, since in the whole year 2017 it amounted to 15.6 TWh, less than 3% of the total generation.

### Appliances: energy demand and user's preferences

Residential appliances can be distinguished according to the energy carriers they require (Mauser et al. 2015) and the operational characteristics (Chen et al. 2012).

Traditionally, household appliances use a single energy carrier to perform their function, usually electricity or gas, which cannot be substituted (Mauser et al. 2015). On



the other hand, some devices can be supplied by multiple energy carriers, namely hot water, electricity, and gas, which are used alternatively or in parallel to operate (Mauser et al. 2017). This type of devices is referred to as *hybrid* and the potential benefit of their application have recently gained interest in literature (Mauser et al. 2015; Mauser et al. 2016; Stamminger et al. 2008). Although the idea of supplying from different energy carriers may sound far from reality, there are solutions already commercially available. Some dishwashers and washing machine can be connected to a hot water supply, drastically reducing the power demand, as the water is no longer internally heated (Stamminger et al. 2008). Gas clothes dryers heat the air by burning gas, while a hot water tumble dryer is equipped with a water-air heat exchanger (Stamminger et al. 2008). Additionally, dual-fuel cookers are widely used, combining gas hobs and electric ovens; although not yet commercially available, it could be possible to combine electricity and gas in the same cooking device (Mauser et al. 2017). Moreover, water can be boiled in an electric kettle or in a kettle (or a pot) placed on an electric hob, as well as in a kettle placed on a gas hob (Oberascher et al. 2011). The hot water needed for space heating and bathing can be provided by electric heaters as well as gas-burning boilers. An innovative alternative is being developed by Nerdalize (Nerdalize), which uses cloud servers as preheating systems in homes, reducing at the same time the consumptions of gas for house heating and of electricity for server cooling.

Our model includes six hybrid devices, namely the dish washer (DW), the washing machine (WM), the tumble dryer (TD), the oven (OV), the cooker hob (HB), and the kettle (KT). They can operate in two possible modes, i.e., electricity-only and hybrid; in the first one, all energy is supplied by the electricity grid and water/air is internally heated by means of an electric resistance. In the second one, DW, WM, and TD are connected to the hot water system and uses electricity for the basic functions of the machine (e.g., fan, motor, circulation pump, electronic devices etc). The cooker hob, the oven, and the kettle can either use only the electricity or they rely on natural gas as well as a small consumption of electricity mainly due to the ignition system. On the other hand, the space heating and hot water (SW) demand are combined and referred to as the thermal load. We assume that the thermal load is a single-energy-carrier load, which can be supplied either by a gas-burning boiler or an electric (water) heater system.

Additionally, the devices are distinguished in shiftable and on-demand. For the former type, the user selects a time window during which the device is supposed to run and conclude its pre-selected task, which corresponds to a power demand profile. The latter type includes not-shiftable devices that have to be switched on and off when needed.

### Demand profile and user's preferences

The total energy consumptions per operation cycles of each appliance are summarized in Table 2, while an example of the electricity-only and multi-carrier demand profiles of a hybrid appliance (i.e., dishwasher) are displayed in Figs. 3 and 4, respectively. The consumption data are derived and adjusted from (Wood and Newborough 2003; Stamminger et al. 2008; Mauser et al. 2017). When using gas or hot water heated by the gas-burning boiler, consumption are assumed to be +30% higher, due to additional distribution losses, heat dissipation, and water-air heat exchange process (Mauser et al. 2015; Mauser et al. 2017). Therefore, the electrical efficiency of a hybrid appliance  $a$  is  $\eta_{e,a} = 1$ , while the thermal efficiency is  $\eta_{h,a} = 0.77$ . Operation preferences set by the user are summarized in Table 3.

The daily thermal demand (Fig. 5) is modeled with five seasonal curves, which are generated by using the MERIT tool (University of Strathclyde). Electric heater systems for both space and water heating are assumed to have an electrical efficiency  $\eta_{e,SW} = 0.98$  (Alahäivälä et al. 2015; Heinen et al. 2016); when a high-efficiency gas-fired boiler is used, we consider a total thermal efficiency of the heating system  $\eta_{h,SW} = 0.89$ , as a results of the boiler efficiency  $\eta_B = 98\%$  (Heinen et al. 2016) and an increase in the thermal load by 10% due to losses in the distribution (Maivel and Kurnitski 2014).

### Problem formulation

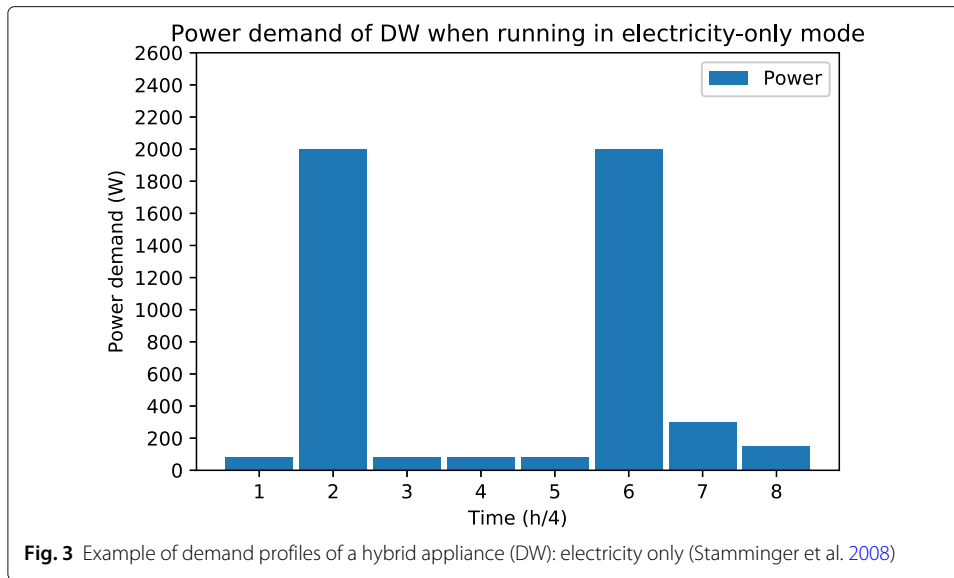
The optimal scheduling problem is modeled as a mixed-integer linear programming (MILP) problem, where the variables to be determined are the status (on=1 or off=0) of each device in each time step with respect to the different energy carriers. In particular,  $\delta_{a,s,t,l}$  is a binary variable indicating the operation status (0 or 1) of appliance  $a$  requiring level  $l$  from the energy carrier  $s$  at time step  $t$ . We simulate a 24 h horizon with 15-min time steps. Five days with different thermal load are simulated with four possible configurations.

We assume that CO<sub>2</sub> signals with quarterly resolution are known at the beginning of the simulated day, so that the supply and demand can be optimally scheduled for the whole day. This may actually not be the case in a real scenario, where data about the German generation mix are available with a couple of hours of delay. However, it is possible to

**Table 2** Energy consumptions per operation cycle of household hybrid appliances

Appliance	Electricity-only mode	Hybrid mode (electricity + hot water/gas)
	kWh	kWh
HB	1.650	0.006 + 2.135 (gas)
OV	2.500	0.150 + 3.055 (gas)
KT	0.183	0.0015 + 0.234 (gas)
DW	1.193	0.160 + 1.343 (hot water)
WM	0.888	0.213 + 0.878 (hot water)
TD	2.460	0.400 + 2.808 (hot water)

Data are based on (Wood and Newborough 2003; Stamminger et al. 2008; Mauser et al. 2017)

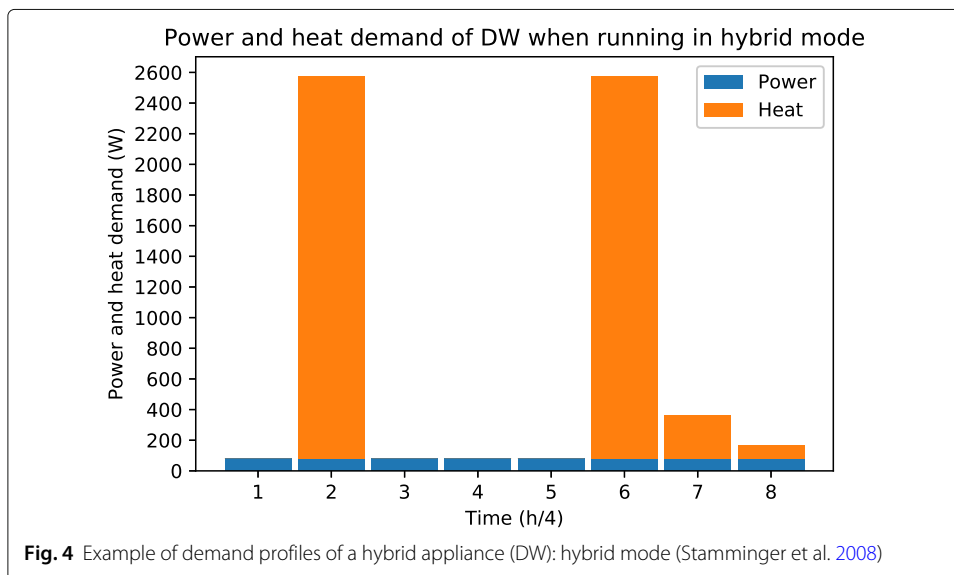


forecast such data with accuracy of around 10%, for example by using those of the previous 24 h as suggested in (Kristinsdóttir et al. 2013). Moreover, according to the proposed problem formulation, devices may not be scheduled to the next day and thus may not benefit from low emissions after the evening peak. To contain the effects of such limitation, main shiftable loads (i.e., DW, WM, and TD) are assumed to have a 24 h operation window and thus they may be scheduled during night period.

**Objective function**

The daily CO<sub>2</sub> emissions to be minimized are defined as follows:

$$\min \left[ \Delta t \cdot \sum_{t=1}^{96} \left( EF_{e,t} \sum_{a \in A} \frac{P_{a,e,t}}{\eta_{e,a}} + EF_h \sum_{a \in A} \frac{P_{a,h,t}}{\eta_{h,a}} + EF_{e,t} \sum_{a \in A} \frac{P_{a,eh,t}}{\eta_{e,a}} \right) \right] \tag{2}$$



**Table 3** Summary of user’s preferences

	HB	OV	KT*	DW	WM	TD	SW
<i>Operation on-demand</i>							
Start $\alpha_a$	19:00	12:00	7:00	20:00	09:00	14:00	00:00
End $\beta_a$	20:00	13:00	7:15	22:00	11:00	16:00	24:00
Duration $\gamma_a$	4	4	1	8	8	8	96
<i>Shifting in time</i>							
Start $\alpha_a$	19:00	12:00	7:00	00:00	00:00	00:00	00:00
End $\beta_a$	20:15	13:15	7:30	24:00	24:00	24:00	24:00
Duration $\gamma_a$	4	4	1*	8	8	8	96

The duration  $\gamma_a$  is expressed in time steps, where each time step is a quarter of an hour. The kettle is assumed to operate 5 min out of one time step

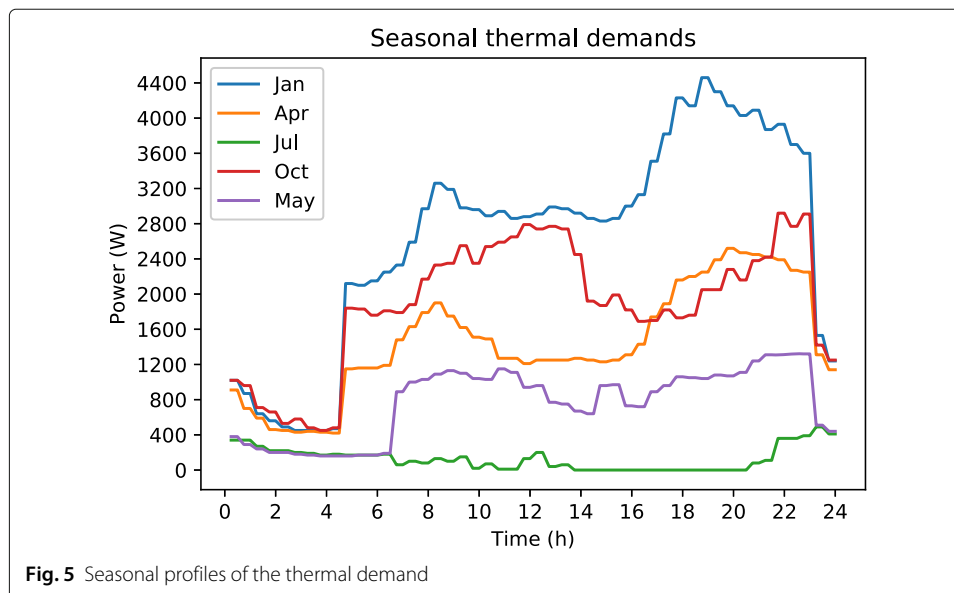
where  $P_{a,e,t}$  is the power consumption of appliance  $a$  at time step  $t$  when operating in electricity-only mode, while  $P_{a,h,t}$  and  $P_{a,eh,t}$  are the heat and electricity demands when operating in hybrid mode.  $\Delta t$  is the duration of one time step, i.e., a quarter of an hour. With respect to the kettle, we consider a 2200 W-device that operates for 5 min out of one time step. By doing so, the energy consumption is realistically set at 183 Wh (Wood and Newborough 2003) and the emissions are calculated accordingly.

The power and/or heat demands at each time step  $t$  for each appliance  $a$  are defined as follows:

$$P_{a,s,t} = \sum_{l=1}^{\gamma_a} \delta_{a,s,t,l} \cdot P_{a,s,l} \quad \forall a \in A, \forall s \in S, \forall t \in T \tag{3}$$

where  $P_{a,s,l}$  is the demand of source  $s$  equal to level  $l$  for appliance  $a$ ,  $T$  is the set of time steps, and  $S$  is the set of energy carriers (electricity-only  $e$ , heat  $h$ , electricity in hybrid mode  $eh$ ). Given the demand profile of a device during its operation, the required power or heat in each quarter of hour corresponds to a level  $l$ . We define  $A$  as the set of all appliances, which does not include the thermal load indicated as  $SW$ .

The objective function is subjected to several constraints as described next.



**Fig. 5** Seasonal profiles of the thermal demand



### Constraints

Hybrid appliances can work in electricity-only or hybrid mode, that means, they require electricity and/or hot water/gas in a time step  $t$  (Equation 4). Additionally, when working in hybrid mode, both electricity and heat have to be (un)used at the same time (Equation 5)

$$\sum_{s \in S} \sum_{l=1}^{\gamma_a} \delta_{a,s,t,l} \leq 2 \quad \forall a \in A, \forall t \in T \quad (4)$$

$$\delta_{a,h,t,l} = \delta_{a,eh,t,l} \quad \forall a \in A, \forall t \in T, \forall l \in [1, \gamma_a] \quad (5)$$

The thermal load can work in electricity-only or gas-only modes, hence in each time step  $t$  it can use one energy carrier at the most (Equation 6) and no hybrid operation is possible (Equation 7). Moreover, one single level of demand can be satisfied at each time step.

$$\sum_{s \in S} \sum_{l=1}^{\gamma_{SW}} \delta_{SW,s,t,l} \leq 1 \quad \forall t \in T \quad (6)$$

$$\delta_{SW,eh,t,l} = 0 \quad \forall t \in T, \forall l \in [1, \gamma_{SW}] \quad (7)$$

The consumer sets an operation window for each appliance  $[\alpha_a, \beta_a]$ , and no operation is allowed outside this interval (Equation 8). Additionally, all appliances have to complete their operation of length  $\gamma_a$  within the operation window and they are assumed to run in non-interruptible mode. Moreover, the levels of demand have to be satisfied consecutively. These constraints are summarized in Equation 9.

$$\delta_{a,s,t,l} = 0 \quad \forall a \in A \cup SW, \forall s \in S, \forall l \in [1, \gamma_a], \forall t \in T \setminus [\alpha_a, \beta_a] \quad (8)$$

$$\delta_{a,s,t,l} = \delta_{a,s,t-1,l-1} \quad \forall a \in A \cup SW, \forall s \in S, \forall l \in [1, \gamma_a], \forall t \in [\alpha_a, \beta_a] \quad (9)$$

The total power imported from the grid is limited to  $P_{e,MAX} = 8$  kW in electricity-only mode and to 3 kW in the hybrid one.

$$\sum_{a \in A \cup SW} \sum_{s \in S \setminus h} P_{a,s,t} \leq P_{e,MAX} \quad \forall t \in T \quad (10)$$

Similarly, the output of the gas-burning boiler is limited to  $P_{b,MAX} = 15$  kW. We indicate with  $A_{hw}$  the set of appliances using hot water in hybrid mode, namely the washing machine, the dryer, and the dishwasher.

$$\sum_{a \in A_{hw} \cup SW} P_{a,h,t} \leq P_{b,MAX} \quad \forall t \in T \quad (11)$$

Moreover, we assume that the dryer has to run after the washing machine ends, hence:

$$\sum_{\tau=1}^{t-1} \sum_{l=1}^{\gamma_{WM}} \sum_{s \in S \setminus eh} \delta_{WM,s,\tau,l} \geq \gamma_{WM} \cdot \sum_{s \in S \setminus eh} \delta_{TD,s,t,0} \quad \forall t \in T \quad (12)$$

### Simulation and evaluation

To evaluate the proposed energy management approach, we consider a household connected to the electricity and gas distribution grids. Power and heat demands of several appliances and the daily thermal load are supplied by the imported electricity, by burning gas, or by water heated with a gas-fired boiler.

### Configurations

Four possible configurations with increasing flexibility are compared:

- Case A: the whole energy demand is supplied by the electricity grid. We assume an efficiency  $\eta = 1$  for all electric appliances and  $\eta_R = 0.98$  for electric (water) heaters. Loads have to run on-demand, without the possibility of being shifted in time.
- Case B: all loads are running in hybrid-mode and the thermal load is supplied by a gas-burning boiler. We assume that appliance's consumptions running in hybrid-mode are 1.3 times higher. The gas-burning boiler has  $\eta_B = 0.98$  and the thermal load is assumed to be 1.1 times higher than in electricity-only mode, due to losses in the distribution system. Loads have to run on-demand, without the possibility of being shifted in time.
- Case C: appliances are optimally scheduled with respect to the energy carriers, according to CO<sub>2</sub> signals. Loads have to run on-demand, without the possibility of being shifted in time.
- Case D: appliances are optimally scheduled with respect to the energy carriers and their operation can be shifted in time, according to user's preferences.

According to these configurations, some constraints may have to be added to the general model defined in the previous section.

### Extra constraints

When all appliances run in electricity-only mode (Case A), it is not possible to use gas to produce hot water or heat, hence Equation 13 is added to the model:

$$\delta_{a,h,t,l} = 0 \quad \forall a \in A \cup SW, \forall l \in [1, \gamma_a], \forall t \in T \quad (13)$$

On the other hand, when all appliances are running in hybrid-mode and the thermal load is supplied by the gas-burning boiler (Case B), Equation 14 is added:

$$\delta_{a,e,t,l} = 0 \quad \forall a \in A \cup SW, \forall l \in [1, \gamma_a], \forall t \in T \quad (14)$$

### Implementation

The MILP model is implemented in Python 2.7 and solved by GUROBI optimizer (Gurobi), which provides a free academic version. We use the Beautiful Soup package (Beautiful) for pulling data out of XML files provided by the ENTSO-E platform. In particular, we use data referred to as *Actual Generation per Production Type*, that is described in (Detailed Data Description) as the “aggregated generation output per market time unit and per production type”. For data analysis and data structure, we use the Numpy package (Numpy V1.11.3.) and the Pandas package (Pandas V0.20.3.). Results are stored and manipulated by using the H5py package (H5py V2.7.0.), while Matplotlib (Matplotlib V2.0.2.) is used to visualize the results. For these simulations, the configuration of the computer hardware used is: CPU Intel®Core™i7-6600U, 2.60 GHz, with 16 Gb of RAM running Windows 10 64 bit. Simulating the scheduling of one day takes 4 to 5 s.

### Results

The proposed optimization problem aims at scheduling household appliances by minimizing carbon emissions due to power and heat supply. The total daily carbon emissions for five days and four configurations are summarized in Table 4.

**Table 4** Total daily carbon emissions [kg] and variations in percentage

Case	18/01/17	19/04/17	19/07/17	18/10/17	8/05/16
A	34.4	18.8	4.1	24.1	5.4
B	24.2 (-30%)*	14.8 (-21%)*	4.5 (+10%)*	18.3 (-24%)*	9.4 (+74%)*
C	24.2 (-30%)*	14.8 (-21%)*	3.9 (-5%)*	18.3 (-24%)*	6.3 (+17%)*
D	24.2 (<1%)**	14.7 (<1%)**	3.7 (-5%)**	18.2 (<1%)**	5.8 (-8%)**

\*: reference case is Case A; \*\*: reference case is Case C

The hybrid operation (Case B) is the closest one to the optimal solution in 3 days out of 5, namely 18 January, 19 April, and 18 October, when the dynamic CO<sub>2</sub>-equivalent intensity factor of the electricity is indeed significantly higher than the one associated with burning gas in the boiler. In these cases, although using hot water and gas implies a +30% increase in the loads' consumptions, switching from electricity to another energy carrier enables to reduce equivalent carbon emissions on average by 25%. Looking at Case C on 19 April, the loads running between 10 am and 16 am, namely the oven and the dryer, are scheduled to run in electricity-only mode, as running in hybrid mode with 1.3 times higher consumptions would increase the equivalent carbon emissions. As one can see in Fig. 2, the equivalent emission factor of the boiler due to the increasing in consumption is, indeed, slightly higher than the hourly CO<sub>2</sub>-equivalent intensity factor of electricity. When running in hybrid mode, shifting loads in time has a minor impact on the total emissions (Case D), due to gas-burning boiler emissions being constant during the day.

On the summer day and on the 8<sup>th</sup> of May 2016, the results show that the hybrid operation would not be the most sustainable one. In these two days, indeed, the electricity-only mode scores the best; on 19 July, the carbon emissions are reduced by 9%, when compared to the hybrid mode. Additionally, there is a further improvement of 5% by choosing the energy carriers for the different loads with the proposed algorithm (Case C), as the thermal load is supplied by the boiler instead of by importing electricity. Moreover, shifting loads' operation in time enable a further reduction in carbon emission of -5% when compared to the optimal scheduling with on-demand operation. In particular, all shiftable appliances run between 11.30 am and 4 pm, when renewable sources have major impact on the generation mix. Overall, between the worst (Case B) and the best scenario (Case D), the proposed scheduling method enables around 18% of carbon savings.

The 8<sup>th</sup> of May 2016 is, as expected, a particularly benevolent scenario, as the dynamic CO<sub>2</sub>-equivalent intensity factor of the grid is very low when compared to the average value of 353 gCO<sub>2</sub>eq/kWh for the German grid, when calculated with the source emission factors summarized in Table 1. The most sustainable solution is achieved in Case A, when all loads are supplied by the electricity grid, up to 11 kW. In this scenario, the hybrid-mode would increase the emissions by 74%; the optimal schedule of Case C leads to +17% of CO<sub>2</sub>eq, due to the lower limit of the maximum power that can be imported from the grid. This limitation implies that the thermal load has to be supplied by the boiler, otherwise it would not be possible to turn on the appliances when required by the user. The results are partially improved in Case D by shifting some appliances in time, enabling around 8% of carbon savings. Considering 3 kW as maximum power limit, between the worst (Case B) and the best scenario (Case D), potential emission savings are around 38%.

As for the total consumptions, the demanded electrical and thermal energy over five days are reported in Table 5. Loads have a higher efficiency when using electricity as main

**Table 5** Total energy consumptions over five days [kWh]

Case	Electricity	Heat
A	215	0
B	5	241
C	39	199
D	43	195

energy carrier. Therefore, energy consumptions are the lowest in Case A, where the losses are minor, as expected.

### Conclusions

Given the increasing electricity residential consumptions and the global attention towards GHG emissions, we propose a method to optimally schedule household loads according to CO<sub>2</sub> signals, with the aim of minimizing the daily equivalent carbon emissions of a single house. Hybrid appliances and the daily thermal load can use electricity imported from the grid, natural gas, or hot water produced in a gas-burning boiler, and, eventually, they can be shifted in time. The problem is formulated as a mixed integer linear problem, where the variables to be determined are binary and indicate the operation status of the appliances requiring a certain level of power or heat from the different energy carriers in each time step. The results show that the proposed algorithm allows to schedule the household loads by significantly reducing the carbon emissions. When the contribution of renewable sources in the generation mix is low, using multiple energy carriers, namely gas, hot water, and electricity, to supply the household appliances and the thermal load can reduce carbon emissions up to 30%, on a winter day. On the other hand, windy and sunny days can benefit more from a scheduling mainly based on electricity, although the maximum power importable from the grid can limit the carbon savings. This is a realistic condition for many European countries, such as Italy, where exceeding this limit leads to an automatic load shedding, and France, where users pay a subscription according to their expected maximum power demand. In general, shifting loads in time has a smaller effect; when the hybrid-mode is to be preferred, emission savings are marginally affected by the variability in the dynamic CO<sub>2</sub>-equivalent intensity factor of the electrical grid, as the main energy carriers are hot water and gas, whose emission factor is constant. When the loads are mainly using electricity, shifting their operations in time while fulfilling the user's preference can reduce the emissions up to around 8%. Overall, switching from a single-carrier mode to a multi-carriers one and vice versa can successfully enable up to 74% equivalent CO<sub>2</sub> emissions reduction. The good performance of the software in terms of run-time means that it can be used for modeling a larger group of households, and it is suitable for real-time scheduling. Future works include a more detailed user's model; in particular, we will include some kind of thermal storage and we will consider the load profiles available on LoadProfileGenerator (Noah Pflugradt), which can simulate the energy demand of several types of German household.

### Abbreviations

CO<sub>2</sub>: Carbon dioxide; DSM: Demand-side management; DW: Dish washer; ENTSO-E: European network of transmission system operators for electricity; GHG: Greenhouse gases; HB: Cooker hob; HVAC: Heating ventilation and air conditioning; KT: Kettle; MILP: Mixed-integer linear programming; OV: Oven; SW: Space heating and hot water; TD: Tumble dryer; WM: Washing machine

**Funding**

This work is supported by the Netherlands Organization for Scientific Research under the NWO MERGE project, contract no. 647.002.006 ([www.nwo.nl](http://www.nwo.nl)). Publication costs for this article were sponsored by the Smart Energy Showcases - Digital Agenda for the Energy Transition (SINTEG) programme.

**Availability of data and materials**

All data generated and analysed during the current study are available from the corresponding author on reasonable request.

**About this Supplement**

This article has been published as part of *Energy Informatics* Volume 1 Supplement 1, 2018: Proceedings of the 7th DACH+ Conference on Energy Informatics. The full contents of the supplement are available online at <https://energyinformatics.springeropen.com/articles/supplements/volume-1-supplement-1>.

**Authors' contributions**

Laura Fiorini designed the study, performed the data analysis, and wrote the manuscript. Marco Aiello discussed the results, reviewed and finalized the manuscript. All authors have read and approved the final manuscript.

**Competing interests**

The authors declare that they have no competing interests.

**Publisher's Note**

Springer Nature remains neutral with regard to jurisdictional claims in published maps and institutional affiliations.

**Author details**

<sup>1</sup>Department of Distributed Systems, University of Groningen, Nijenborgh 9, 9747 AG Groningen, The Netherlands.

<sup>2</sup>Department of Smart Energy Systems and Services, University of Stuttgart, Universitätsstraße 38, 70569 Stuttgart, Germany.

Published: 10 October 2018

**References**

- Alahäivälä A, Heß T, Cao S, Lehtonen M (2015) Analyzing the optimal coordination of a residential micro-CHP system with a power sink. *Appl Energy* 149:326–337
- Beautiful Soup V4.6.0. <https://www.crummy.com/software/BeautifulSoup/bs4/doc/#>. Accessed 07 Mar 2018
- Braun M, Dengiz T, Mauser I, Schmeck H (2016) Comparison of multi-objective evolutionary optimization in smart building scenarios. In: *European Conference on the Applications of Evolutionary Computation*. Springer, Cham. pp 443–458
- Chen Z, Wu L, Fu Y (2012) Real-time price-based demand response management for residential appliances via stochastic optimization and robust optimization. *IEEE Trans Smart Grid* 3(4):1822–1831
- Craig Morris Germany Nearly Reached 100 Percen Renewable Power on Sunday. <https://energytransition.org/2016/05/germany-nearly-reached-100-percent-renewable-power-on-sunday>. Accessed 11 May 2016
- Dahl Knudsen M, Petersen S (2016) Demand response potential of model predictive control of space heating based on price and carbon dioxide intensity signals. *Energy Build* 125:196–204
- Detailed Data Description. <https://docstore.entsoe.eu/Documents/MC%20documents/Transparency%20Platform/MOP/DetailedDescriptionDocument.pdf>. Accessed 30 July 2018
- Edenhofer O, Pichs-Madruga R, Sokona Y, Seyboth K, Matschoss P, Kadner S, Zwickel T, Eickemeier P, Hansen G, Schlömer S, von Stechow C (2011) IPCC, 2011: Summary for Policymakers. In: *IPCC Special Report on Renewable Energy Sources and Climate Change Mitigation*. Cambridge University Press, Cambridge. p 246
- Entsoe Transparency Platform. <https://transparency.entsoe.eu/>. Accessed 07 Mar 2018
- European Commission Buildings. <https://ec.europa.eu/energy/en/topics/energy-efficiency/buildings>. Accessed 07 Mar 2018
- Gurobi Optimizer V7.0.2. <http://www.gurobi.com/>. Accessed 07 Mar 2018
- H5py V2.7.0. <https://www.h5py.org/>. Accessed 07 Mar 2018
- Haines V, Lomas K, Murray T, Ian R, Tracy N, Monica G (2010) How Trends in Appliances Affect Domestic CO2 Emissions : A Review of Home and Garden Appliances. *Dep Energy Cli Chang* March 2010:1–6. Department of Energy and Climate Change (DECC)
- Heinen S, Burke D, O'Malley M (2016) Electricity, gas, heat integration via residential hybrid heating technologies - An investment model assessment. *Energy* 109:906–919
- Johnke B (2009) Emissions From Waste Incineration. In: *Good Practice Guidance and Uncertainty Management in National Greenhouse Gas Inventories*. pp 455–468. [https://www.ipcc-nggip.iges.or.jp/public/gp/bgp/5\\_3\\_Waste\\_Incineration.pdf](https://www.ipcc-nggip.iges.or.jp/public/gp/bgp/5_3_Waste_Incineration.pdf)
- Kono J, Ostermeyer Y, Wallbaum H (2017) The trends of hourly carbon emission factors in Germany and investigation on relevant consumption patterns for its application. *Int J Life Cycle Assess* 22(10):1493–1501
- Kristinsdóttir AR, Stoll P, Nilsson A, Brandt N (2013) Description of climate impact calculation methods of the CO2e-signal for the Active House project. *Tech Rep*. <http://kth.diva-portal.org/smash/record.jsf?pid=diva2:651166>. Accessed 08 May 2018
- Maivel M, Kurnitski J (2014) Low temperature radiator heating distribution and emission efficiency in residential buildings. *Energy Build* 69:224–236
- Matplotlib V2.0.2. <https://matplotlib.org/>. Accessed 07 Mar 2018
- Mauser I, Schmeck H, Schaumann U (2015) Optimization of Hybrid Appliances in Future Households. In: *International ETG Congress 2015; Die Energiewende - Blueprints for the new energy age*. VDE, Berlin. pp 1–6

- Mauser I, Müller J, Allerding F, Schmeck H (2016) Adaptive building energy management with multiple commodities and flexible evolutionary optimization. *Renew Energy* 87:911–921
- Mauser I, Müller J, Schmeck H (2017) Utilizing Flexibility of Hybrid Appliances in Local Multi-modal Energy Management. In: Proceedings of the 9th international conference on energy efficiency in domestic appliances and lighting (EEDAL '17)-Part III. Publications Office of the European Union, Luxembourg. pp 1282–1297
- Nerdalize. <https://www.nerdalize.com>. Accessed 30 July 18
- Nilsson A, Stoll P, Brandt N (2017) Assessing the impact of real-time price visualization on residential electricity consumption, costs, and carbon emissions. *Resour Conserv Recycl* 124:152–161
- Noah Pflugradt Load Profile Generator. <http://www.loadprofilegenerator.de>. Accessed 08 May 2018
- Numpy V1.11.3. <http://www.numpy.org/>. Accessed 07 Mar 2018
- Oberascher C, Stamminger R, Pakula C (2011) Energy efficiency in daily food preparation. *Int J Consum Stud* 35(2):201–211
- OECD IEA (2015) Energy and Climate Change: World Energy Outlook Special Report. International Energy Agency, Paris
- Pandas V0.20.3. <https://pandas.pydata.org/>. Accessed 07 Mar 2018
- Paridari K, Parisio A, Sandberg H, Johansson KH (2015) Robust Scheduling of Smart Appliances in Active Apartments With User Behavior Uncertainty. *IEEE Trans Autom Sci Eng* 13(1):247–259
- Siano P (2014) Demand response and smart grids - A survey. *Renew Sust Energy Rev* 30:461–478
- Sou KC, Kördel M, Wu J, Sandberg H, Johansson KH (2013) Energy and CO<sub>2</sub> efficient scheduling of smart home appliances. In: 2013 European Control Conference (ECC). IEEE, Zurich. pp 4051–4058
- Statistics and Data. <https://electricity.network-codes.eu/publications/statistics-and-data/>. Accessed 08 Mar 2018
- Stamminger R, Broil G, Pakula C, Jungbecker H, Braun M, Rüdener I, Wendker C (2008) Synergy potential of smart appliances. CiteSeer. <http://citeseerx.ist.psu.edu/viewdoc/download?doi=10.1.1.378.4289&rep=rep1&type=pdf>
- Stocker TF, Qin D, Plattner G-K, Tignor M, Allen SK, Boschung J, Nauels A, Xia Y, Bex V, Midgley PM (2014) IPCC, 2013: Climate Change 2013: The Physical Science Basis. Contribution of Working Group I to the Fifth Assessment Report of the Intergovernmental Panel on Climate Change. Cambridge University Press, Cambridge
- Stoll P, Brandt N, Nordström L (2014) Including dynamic CO<sub>2</sub> intensity with demand response. *Energy Policy* 65:490–500
- University of Strathclyde Demand Profile Generators. <https://www.strath.ac.uk/research/energysystemsresearchunit/>. Accessed 08 May 2018
- Weisser D (2007) A guide to life-cycle greenhouse gas (GHG) emissions from electric supply technologies. *Energy* 32(9):1543–1559
- Wood G, Newborough M (2003) Dynamic energy-consumption indicators for domestic appliances: Environment, behaviour and design. *Energy Build* 35(8):821–841

**Submit your manuscript to a SpringerOpen<sup>®</sup> journal and benefit from:**

- Convenient online submission
- Rigorous peer review
- Immediate publication on acceptance
- Open access: articles freely available online
- High visibility within the field
- Retaining the copyright to your article

---

Submit your next manuscript at ► [springeropen.com](http://springeropen.com)

---